

Installation Instructions for **HMI** HOYME **ADP-1102-10A**  
Interlocks 24Vac Combustion Air Control Damper  
To 120Vac Safety Control Circuit  
**Relay Coil: 120Vac; 24Vac. Contact Points – 10Amps**

INSTALLATION OF THIS ADAPTOR SHALL BE IN ACCORDANCE WITH REQUIREMENTS OF THE AUTHORITIES HAVING JURISDICTION.

Refer also to **HMI** HOYME Installation Instructions: 'Combustion Air Control, Series HOM'.

**ADP-1102-10A**



4" x 5" x 2 1/2"  
101 x 127 x 64 mm



This Adaptor, with two relays, senses a line voltage safety control signal, proves a 24Vac damper to be open and then sends the signal back to the line voltage control circuit. For DC safety control systems 250mVdc to 100Vdc, use **HMI** HOYME ADP- 0MV2-S5A.

I.D.: ADP- 1102 – 10A; c/w 2 Relays: Coils- 120Vac and 24Vac. Contacts-10Amps

- For one appliance, use one Adaptor and one Damper, Series HOM, Type SF1.
- For two appliances, use two Adaptors and one damper, Series HOM, Type-SF1.
- Adaptors may be mounted on side of appliance control box. Leads must be suitably cabled and fastened. If Adaptor is mounted away from control box, line voltage leads shall be enclosed in suitable raceways. Refer to local electric codes.

- Use an approved 24Vac transformer of adequate capacity (10 VA min.) if required.
- Supply for the transformer primary shall be taken from the line voltage supply for the appliance. Refer to applicable codes.
- Always conduct a thorough checkout after installation is complete.
- Affix attached wiring diagram label adjacent to appliance wiring diagram label.
- Note: For controlled circuits having a capacity equal to the load, use wiring diagram, Option #1.(10 Amps Max.) See Wire Diagram.
- Note: For control circuits having a capacity less than the load, use Option number #2.

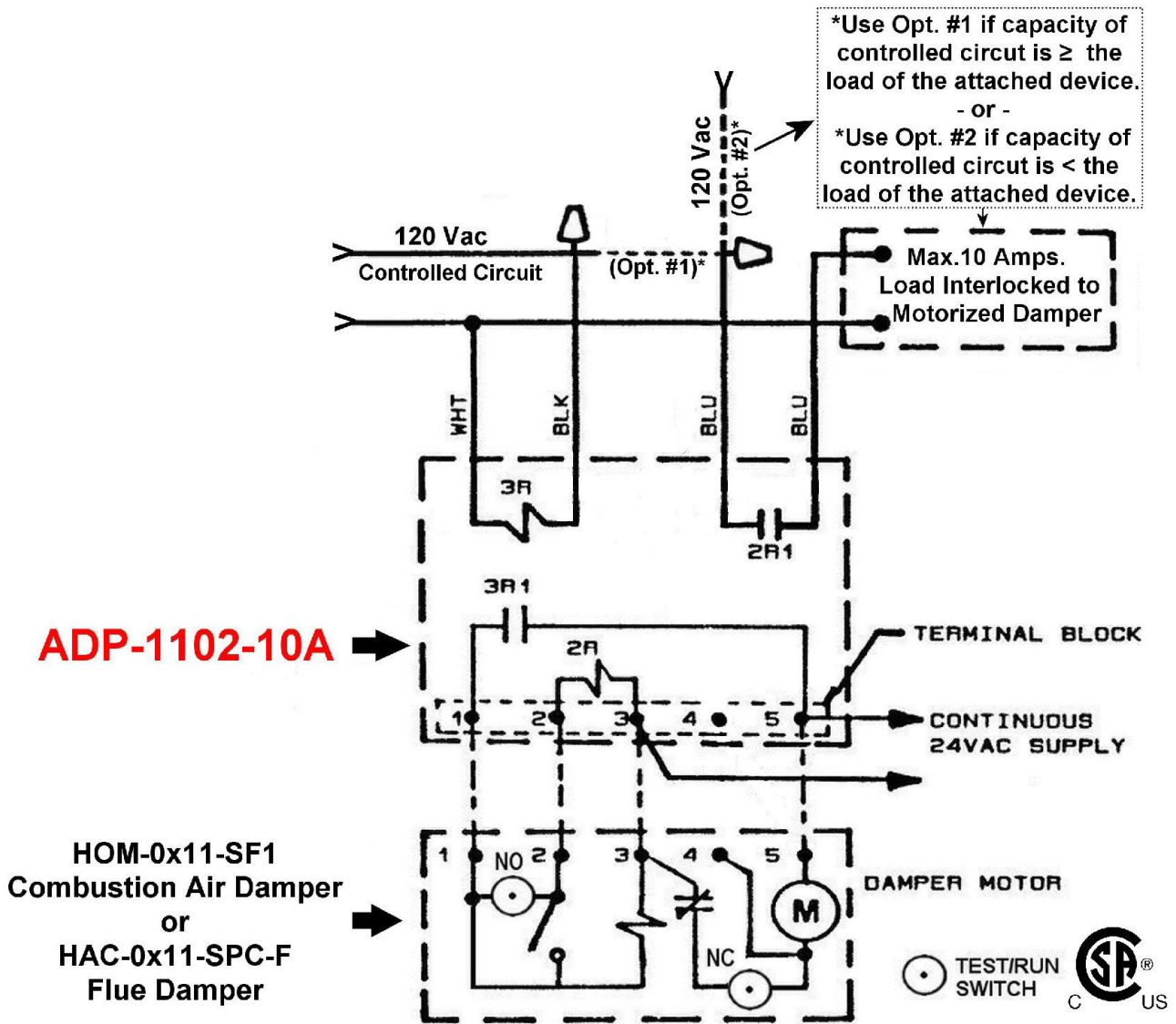
1. Turn temperature control to lowest setting.
2. Turn off electrical power to heating appliance.
3. Disconnect controlled line voltage lead from the load terminal.
4. For Option #1 use a screw-on wire connector to join Adaptor Black & Blue lead to the controlled line voltage as in **3** above. For Option #2 join Adaptor Black lead only to the controlled line voltage and a Blue lead directly to 120Vac line.
5. Join the remaining Adaptor Blue lead to the load.
6. Connect Adaptor WHITE lead to the common side of the line voltage.
7. Connect damper wires BLACK (1), RED (2), BROWN (3) and BLUE (5) to Adaptor terminals 1, 2, 3 and 5 respectively.
8. Connect 24Vac continuous supply to Adaptor terminals 3 and 5.
9. Turn on electrical power supply. Damper will close. Note: 'TEST/RUN' manual switch shall be in the 'RUN' position.
10. Turn temperature control to call for heat. Damper will open and the appliance will operate normally.

Note: Where a low limit may allow operation of the burner or fuel valve when thermostat is not calling for heat, damper shall be used only in conjunction with Adaptor as shown.

Additional wire shall be of the same size as originally used when completing electric circuits.

Note: This marking is also on label to be affixed adjacent to appliance wiring diagram.

**SCHEMATIC WIRING DIAGRAM FOR  
COMBUSTION AIR / FLUE CONTROL DAMPER  
INTERLOCKED TO LINE VOLTAGE  
SAFETY CONTROL CIRCUIT USING ADAPTOR ADP-1102-10A**



For more information, please contact **HMI** HOYME Manufacturing Inc. @ 1-800-661-7382  
[www.hoyme.com](http://www.hoyme.com)